



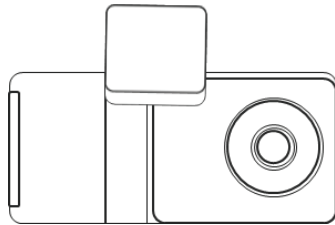
DASH CAMERA INSTALLATION GUIDE



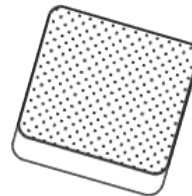
THANK YOU!!

We are excited to introduce you to your new AI-12 Connected Dash Camera. With the AI-12 you can harness the power of video to connect your fleet vehicle, help protect your drivers on the road and save lives.

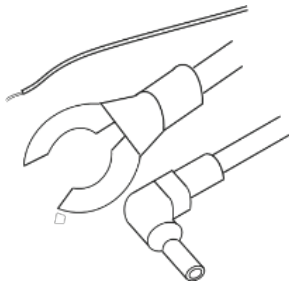
WHAT'S IN THE BOX



AI-12 Camera



Mounting bracket



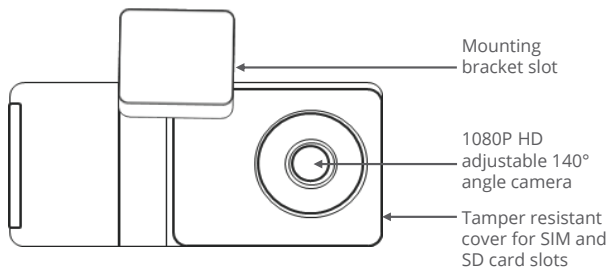
Hardwire Kit



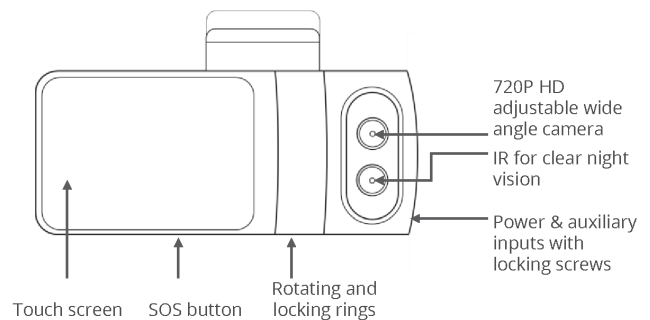
Proprietary screwdriver

AI-12 FEATURES

Road-facing camera

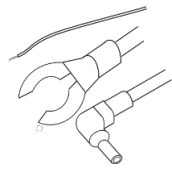


Cabin-facing camera

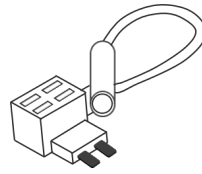


INSTALL YOUR AI-12

WARNING: This type of installation should be performed by a qualified or professional person only. Working with your vehicles power system can be dangerous for you and your vehicle. In any doubt, consult a professional.



Hardwire Kit



Add a fuse kit



Fuse tape

HARDWIRE TO THE FUSE BOX

STEP 1. Locate The Fuse Box

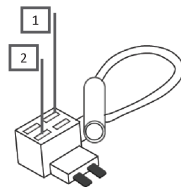
Check the Owner's manual for the location of the fuse box. It may vary depending on make and model. Remove the plastic panel to access the fuse box. It may open simply by lifting a tab or pulling it with your fingers, or use a flat tool that can pinch in between the plastics.

STEP 2. Which Slot Should I Use?

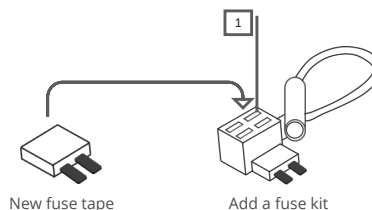
Use a circuit tester to test which fuse is constant (typically red) and provides 12v of power. A fuse that is constant will stay active when the vehicle is off. The camera will automatically enter standby mode when the vehicle is not moving for 10 minutes.

STEP 3. Add a Fuse Kit

We recommend using an add-a-fuse kit included in our Essential Install Package, for a more secure, long lasting installation. The add -a-fuse kit provides a fuse slot for the existing OEM circuit (constant or ignition switched, #2 in picture below) and another fuse slot for the new circuit for the dashcam device (#1 in picture below).



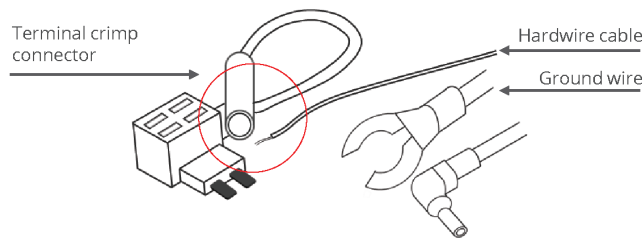
Insert the new fuse tap provided in the kit into "slot 1" and the fuse from the fuse box into "slot 2" (Constant or Ignition Switch). If you set them with the wrong order, it will not feed power to the hardwire kit.



New fuse tape

Add a fuse kit

Connect the hardwiring cable with the terminal crimp connector from the add-a-fuse kit. Trim off some of the rubber tubing to expose the wiring on your hardwiring cable. Then crimp them down together. You should be able to crimp the fuse kit with a standard needle nose pliers. We recommend using electrical tape to further secure the wire.



Connect your Add-a-Fuse Kit to the vehicle fuse slot that you have chosen.

STEP 4. Ground the Hardwire Kit

The ground wire is usually in a C shape or a ring. To connect the ground wire, slip it under a metal bolt or screw in your vehicle.

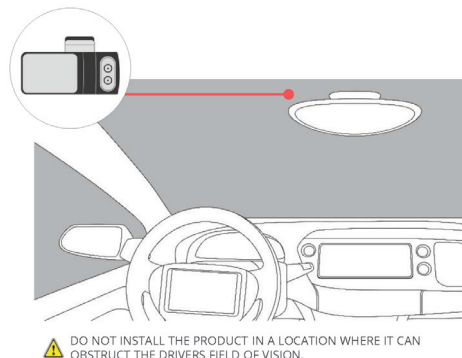
You may need a socket wrench set to loosen the bolt. Loosen the bolt enough to slip it in and tighten it back up afterwards. A loose ground can result in power issues for your dashcam. We recommend grounding your wire to an unpainted bare metal bolt.

STEP 5: Test Your Dash Cam

Plug the power cable to the dashcam. Start your vehicle to test if the dashcam powers up. Once you tested your dashcam, run the power cable along the headliner of the car along the A-Pillar to the power source for a clean installation.

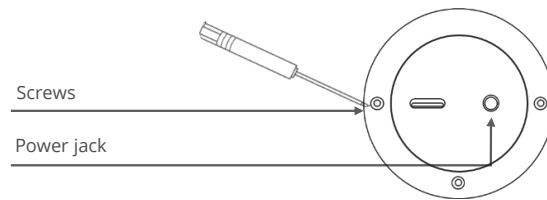
STEP 6: Attach Your Camera to the Front Windshield

- ▶ Place the camera as high as possible on the driver side of the vehicle
- ▶ Remove the 3M adhesive tape cover and mount the camera to the windshield



ADJUSTING THE VIEWING ANGLE

- ▶ Remove the AI-12 camera from the mount.
- ▶ **To Adjust the Road-facing camera** simply rotate the center mount.
- ▶ **To Adjust Driver Facing Camera**, Use the provided screwdriver to loosen the 3 screws on the round side of the camera, Do Not Fully Remove them. Next rotate the body near the two inward facing lenses to adjust. Tighten security screws when finished to lock into place.



Access the Setting Menu of the AI-12 Camera

- ▶ Press the camera touchscreen.
- ▶ **Enter the default PIN number 3333.**
- ▶ **The camera is now unlocked and the Settings menu is now accessible.**

CALIBRATING THE AI-12'S SENSORS

Extremely Important!!!

The AI-12 contains an internal accelerometer that detects unsafe driving events. The accelerometer is not calibrated in advance as the installation in every vehicle is different.

Please follow the following steps to calibrate the accelerometer.

Before you start, make sure that the vehicle is parked on a level surface.

- ▶ Turn on the vehicle's ignition.
- ▶ Check that the camera is on.
- ▶ Press the touchscreen and enter the security PIN.
- ▶ Enter into the 'Settings' menu.
- ▶ Select 'Calibrate'.
- ▶ Calibrating the AI-12's sensors

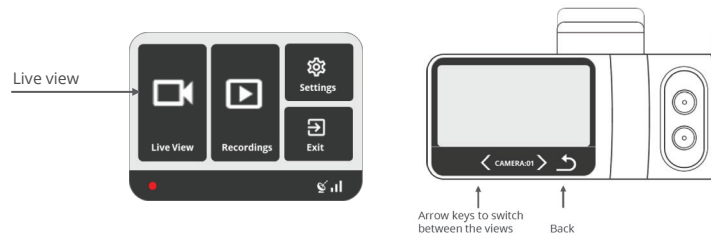
*The calibration process takes about a second and once completed. Note: Recalibration is required in case of transferring the dashcam to another vehicle.

Settings Menu

- ▶ WiFi Hotspot
- ▶ Add APN
- ▶ Distracted Driver
- ▶ U.S. Date format
- ▶ Notify Live Streaming
- ▶ Calibration
- ▶ Format SD Card
- ▶ Video Preset
- ▶ Driver Camera
- ▶ In-Cabin Recording
- ▶ Speed in MPH
- ▶ Change PIN
- ▶ Brightness
- ▶ Power Off
- ▶ Select APN
- ▶ Text Overlay
- ▶ Driver Position
- ▶ Audio Alarms
- ▶ Change Driver PIN
- ▶ Serial Number

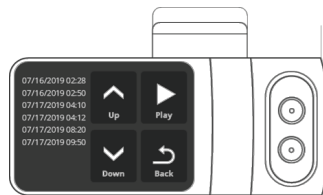
VIEW LIVE VIDEO

- ▶ Enter the 'Live View' mode in the main menu.
- ▶ The live video will be displayed on the screen.
- ▶ Use the arrow keys below the screen to switch between the road and cabin facing cameras.
- ▶ Use the arrow back button to return to the main menu.



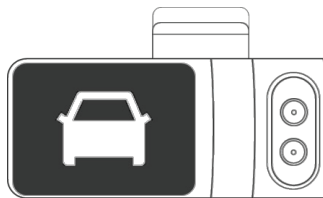
VIEW RECORDED VIDEOS

- ▶ Enter the 'Recordings' mode in the main menu.
- ▶ All the recorded videos on the SD card will be displayed in a list, sorted by date and time.
- ▶ Use the arrow buttons to scroll through the list.
- ▶ Select the video you would like to view and then click the 'Play' button.



DRIVING ALERTS!

- ▶ A white vehicle icon will be displayed on the screen while driving.
- ▶ In case of a dangerous driving events such as violent turn or unsafe driver behavior, the car icon will turn red, indicating a visual alert for the driver.
- ▶ In addition, a noise alert will sound off from the camera.



THAT'S IT. YOU'VE SUCCESSFULLY INSTALLED YOUR DASHCAM!

NOW CALL 888-228-4460 ex 2 and our 24 hour support will add the camera to your platform!
Please have the Camera IMEI number ready for them.